

AP 65 Mounting Kit Installation Notes

These *Installation Notes* provide instructions for mounting the AP 65 Wireless Access Point using the AP 65 mounting kit (part number AP-65-MNT).

The AP 65 mounting kit can be used to securely attach the AP 65 Wireless Access Point to a wall, ceiling, office cubicle, or most flat surfaces, as well as provide additional anti-theft security protection. These *Installation Notes* describe the following instructions:

- [“Package Contents” on page 1](#)
- [“Before Getting Started” on page 2](#)
- [“Detaching the Desk Stand” on page 2](#)
- [“Solid Wall Mounting” on page 4](#)
- [“Ceiling Tile Rail Mounting” on page 5](#)
- [“Secure Wall Mounting” on page 7](#)

Before installing the AP 65, please read the *AP 65 Wireless Access Point Installation Guide* as well as these *Installation Notes* to determine what tools and accessories (if any) are required.

Package Contents

The following components are included in your AP-65-MNT kit:

- Wall mounting cradle
- Security T-bar
- 9/16" ceiling tile rail adapter
- Recessed 15/16" ceiling tile rail adapter
- Solid wall mount standoff
- Security T-bar mounting screw (6-32 x 1" Torx Head) (1)
- Cradle mounting screws (6-32 x 1" Phillips Flat Head) (2)

Inform your supplier if there are any incorrect, missing or damaged parts. If possible, retain the original packing materials and use them to repack the product in case there is a need to return it.

Before Getting Started

Select a location as close as possible to the center of the intended coverage area. The location should be free from obstructions or obvious sources of interference. Normally, the higher you place an access point or air monitor, the better its performance will be.

Use the following specifications to determine the proper clearance in your intended location.

The AP 65 dimensions are:

With antenna stowed:	100mm x 100mm x 37mm (HxWxD) 3.94 x 3.94" x 1.47"
With antenna fully extended:	167mm x 100mm x 37mm 6.58" x 3.94" x 1.47"
AP 65 unit weight is:	0.227 kilos 0.5 lbs

Detaching the Desk Stand

The AP 65 is shipped with a pre-installed desk stand that allows you to place the AP vertically on a desk or table top. To mount the AP using the one of the methods provided by the mounting kit, you need to detach the desk stand.

To detach the desk stand:

1. On the rear of the AP 65, press down the tab on the lower left corner that secures the desk stand to the device (see [Figure 1](#)).
2. Twist the stand counter-clockwise to detach it from the AP as shown in [Figure 1](#).

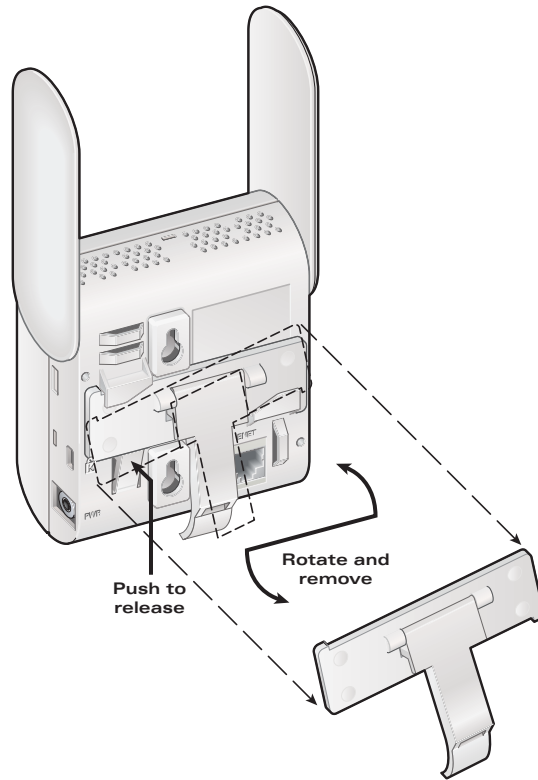


FIGURE 1 Detaching the Desktop Stand

To reattach the desk stand:

1. Align the desk stand at approximately a 30 degree angle to the slot guides on the rear of the AP.
2. Twist the stand clockwise until the stand clicks into place on the AP.

Solid Wall Mounting

Use the wall mount standoff adapter to mount the AP 65 to a solid wall surface where there is no wall cavity available for cable access. The adapter provides a standoff that allows you to run standard CAT-5/6 Ethernet cable and RJ-45 into the rear of the AP.

NOTE: You must supply the screws to install the adapter to the wall.

To install the AP using the wall mount standoff adapter:

1. With the cable tie slots at the upper left, screw the adapter onto the wall as shown in [Figure 2](#).
2. Pass the Ethernet cable through the notch on the left side of the adapter.
3. Secure the cable to the adapter using the cable tie slots.
4. Align the AP 65 at approximately a 30 degree angle to the adapter rail (see [Figure 2](#)).
5. Pushing towards the rail slightly, twist the AP clockwise until the device clicks into place on the rail.
6. Orient the antenna. For best performance, swivel the antenna so that it is oriented vertically.

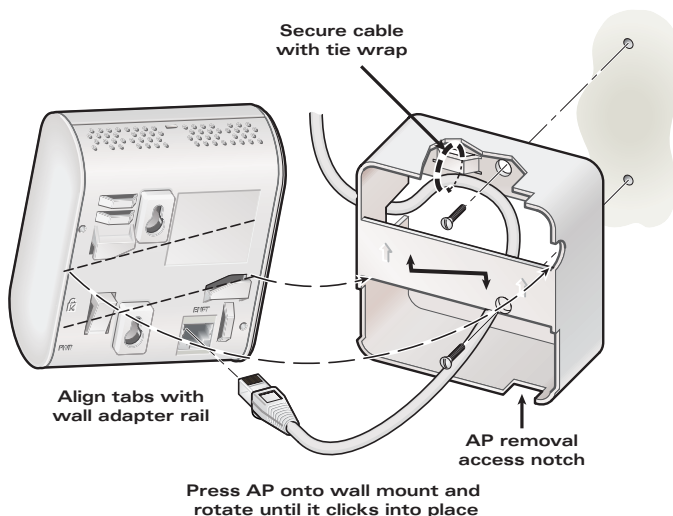


FIGURE 2 Installing AP Using the Wall Mount Standoff Adapter

Ceiling Tile Rail Mounting

The AP 65 enclosure supports an integrated 15/16" ceiling tile rail guide slot designed to snap onto standard, non-recessed 15/16" tile rail; the optional mounting kit is not required for this installation (see the *AP 65 Installation Guide* for information on how to use the integrated ceiling tile rail guide slot).

The mounting kit supports the following types of ceiling tile rail installations:

- mounting onto a 15/16" ceiling tile rail where the rail is recessed above the tile
- mounting onto a 9/16" ceiling tile rail (rail can be recessed or non-recessed)

To install the AP using a ceiling tile rail adapter:

1. Align the ceiling tile rail adapter at approximately a 30 degree angle to the slot guides on the rear of the AP (see [Figure 3](#)).
2. Twist the ceiling tile rail adapter clockwise until the adapter clicks into place on the AP (see [Figure 3](#)).
3. Align the AP with the ceiling tile rail mounting slot guides at approximately a 30 degree angle to the ceiling tile rail. Ensure any FE cable slack is located above the ceiling tile.
4. Pushing toward the ceiling tile, twist the AP clockwise until the device clicks into place on the ceiling tile rail (see [Figure 3](#)).

5. Orient the antenna. For best performance, swivel the antenna so that it is oriented vertically.

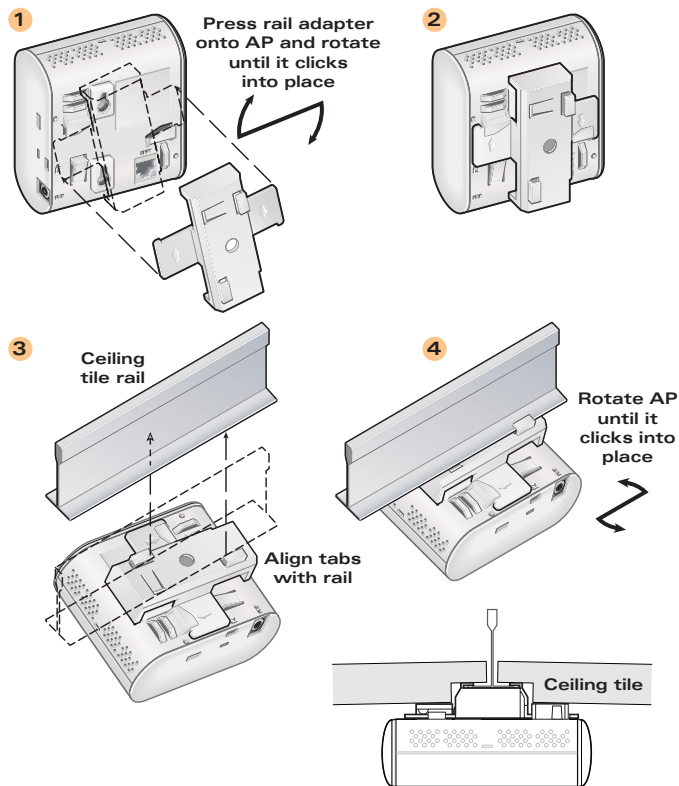


FIGURE 3 Installing AP Using the Ceiling Tile Rail Adapter

Secure Wall Mounting

The mounting cradle can be used to mount the AP 65 directly to a wall, ceiling, underneath a counter, or similar flat surface. Two screw holes on the mounting cradle support installation of the cradle directly onto a pre-installed, in-wall, NEMA-style gang box.

To install the AP 65 on a wall, ceiling, or similar flat surface using the mounting cradle:

1. Insert the Fast Ethernet (FE) cable through the hole in the mounting cradle (see [Figure 4](#)), then attach the mounting cradle to the surface using the appropriate fasteners (not included) or the screw holes on the in-wall gang box.

If necessary, attach an RJ-45 male connector to the FE cable.

2. (Optional) Align and attach the AP security T-bar to the AP 65 as shown (see [Figure 4](#)).

The security T-bar deters theft of the AP 65 when installed in areas where security cannot be guaranteed. It is not required for mounting the AP 65.

3. Insert the FE connector into the FE port.
4. Align the AP 65 with the mounting slots as shown in [Figure 4](#). Push the AP onto the mounting tabs to secure the AP 65 in place.
5. If you are using the security T-bar, secure the T-bar to the mounting cradle with the security T-bar screw.
6. Orient the antennas for optimal performance. Typically, the best results are achieved when the antennas are oriented vertically.

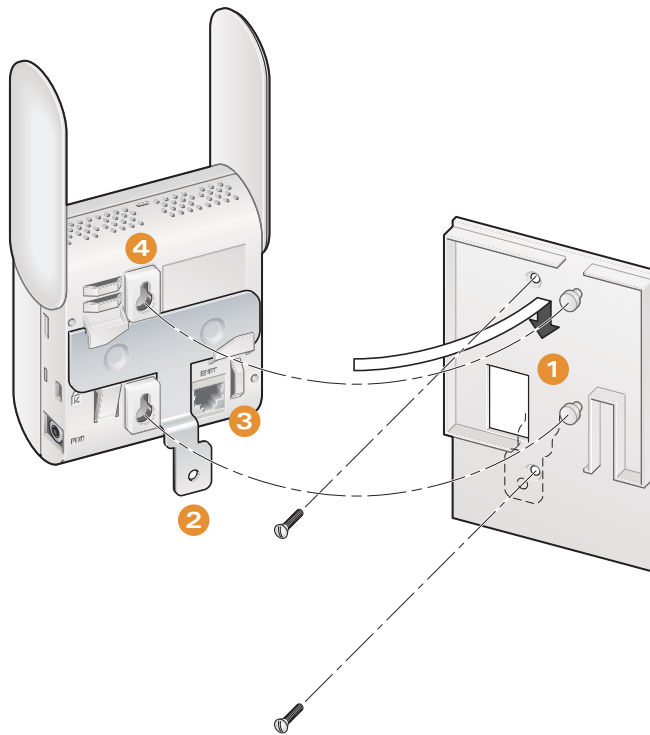


FIGURE 4 Installing AP Using the Wall Mount Cradle